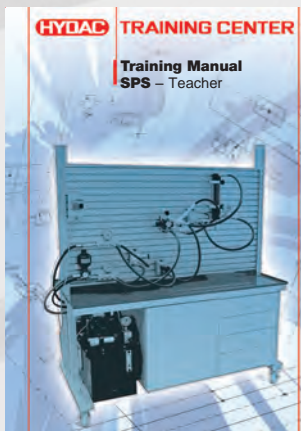
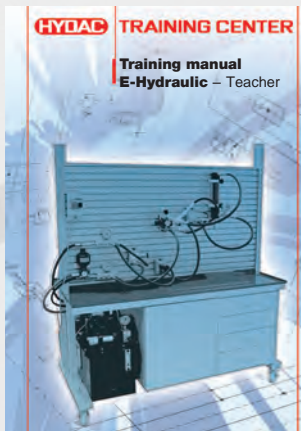
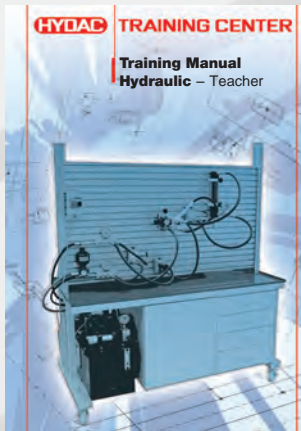


**HYDAC**

**INTERNATIONAL**

**Hydraulic Trainer**





## The benefits to you

- Hydraulic Trainer from a well-known manufacturer of hydraulics (HYDAC)
- All components feature a rugged industrial design
- CE-Marking
- Well-thought-out overall concept with everything from a single source
- Trainer, power unit, components, training tasks and support in-house
- Commissioning and training possible
- Practical with appealing design
- Successful mix of form and function
- Simple operation and tool-free circuit design
- Highly robust, low-leakage industrial connectors
- Modular design, thus very flexible and expandable
- Individual integration of additional components is possible
- Drawer cabinet and hose holder for clean storage of all components

## Power unit

- Power unit with oil-immersed motor for 230 V / 50 Hz, no three-phase connection required (16A)
- Very quiet and well isolated
- Flow rate of 2x 3.7 l/min (2-user)
- Pumps for the 2-user version are separately switchable, with dedicated pressure connection
- Separate set maximum pressure relief
- Automatic discharge to the tank with off switch
- One controller with on / off-switch for each pump / side with connector and EMERGENCY-STOP
- Other voltage ranges are available on request

## Components

- Can be positioned freely on the wall
- Patented mounting system
- Attractive design with anodized aluminum blocks
- Industrial components of HYDAC products (practical)

## Comprehensive Basic Package

- Hydraulic components with hand-lever valves (see parts list)
- Built according to the BIBB (Federal Institute for vocational training) specifications
- All tasks included in the task book are directly applicable

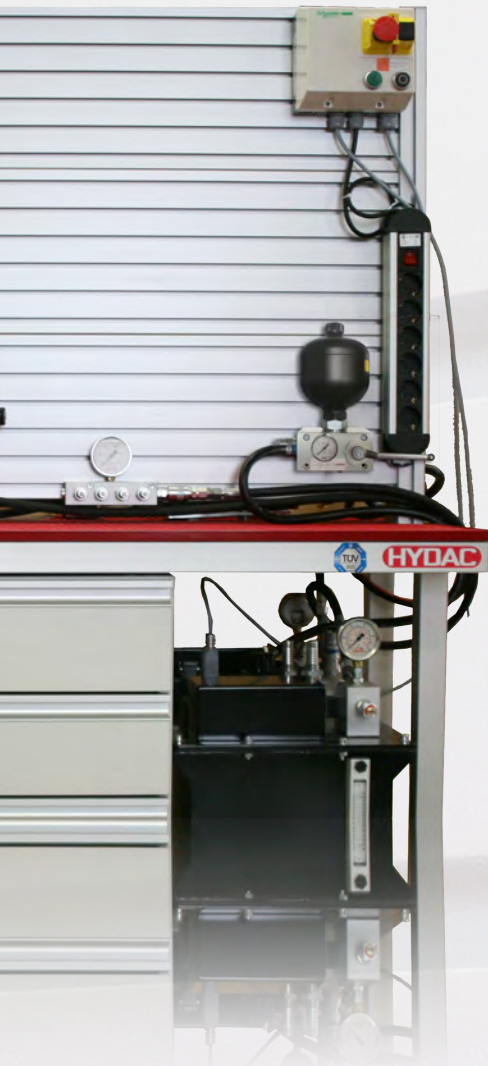
## Expansion Steps

- Electro-Hydraulic valves with manual override
- Electro-Hydraulic Switchbox
- PLC technology
- Proportional technology
- Functional modules / custom applications (upon request)



## In-house HYDAC Training

- Hydraulic-  
Basic training
- Hydraulic-  
Advanced seminars
- Hydraulic-  
System- and Control technology
- Service-related seminars
- Maintenance training
- Special Seminars
- E-Learning



**Basic Hydraulics**  
Symbol basics  
Description

In this WBET the basics of symbols in accordance with DIN ISO 1219 for hydraulics will be introduced.

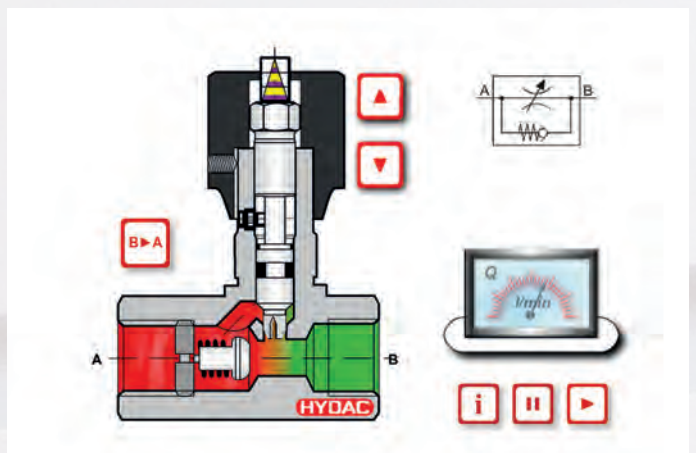
**Learning time**  
40 minutes

**Learning objective**  
After this WBET, you should be able to recognize and name the different symbols.

**Learning content**  
The WBET is organized as follows:

- Introduction
- Basic symbols
- Hydraulic pumps
- Hydrocylindrical valves
- Pressure valves
- Check valves
- Flow valves
- Storage
- Processing
- Display and measuring devices

**HYDAC TRAINING CENTER**





Cat.: Accumulators D 30,000



Catalogue: Filtertechnik D 70,000



Cat.: Process Technology D 77,000



Cat.: Filer Systems D 79,000



Broch.: Compact-Hydraulics D 53,000



Catalogue: Accessories D 61,000

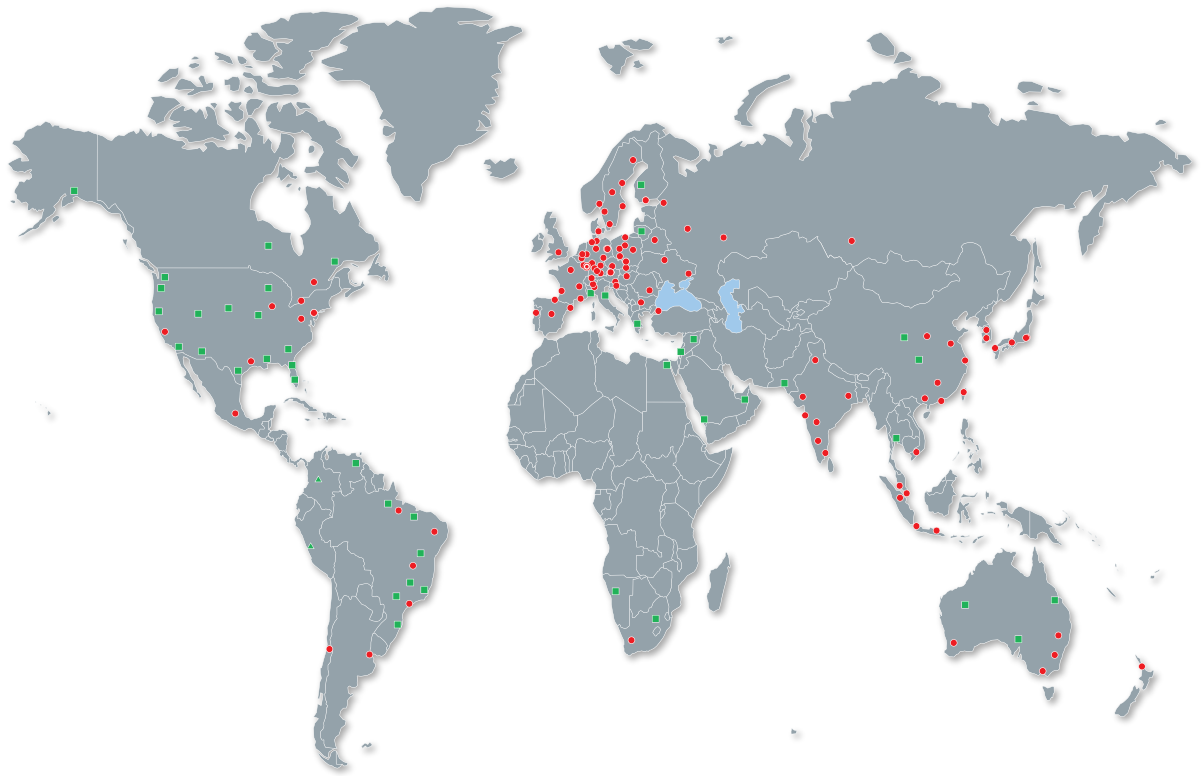


Catalogue: Electronics D 180,000



Broch.: Cool. Syst. DEF 5,700

# Globale Presence. Local Expertise. [www.hydac.com](http://www.hydac.com)



- HYDAC Headquarters
- HYDAC Companies
- HYDAC Distribution- and Service Partners

## HYDAC INTERNATIONAL

HYDAC Systems & Services GmbH  
Training Center

Sonnenallee 1  
D-66287 Quierschied-Göttelborn  
Campus Göttelborn-Süd  
Germany

Phone:  
+49 (0) 68 97 / 509 -01

Fax:  
+49 (0) 68 97 / 509 - 303

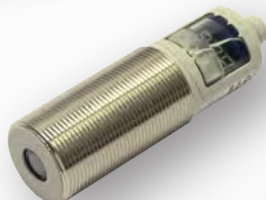
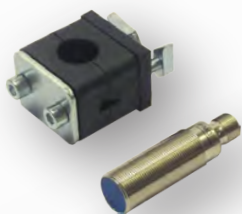
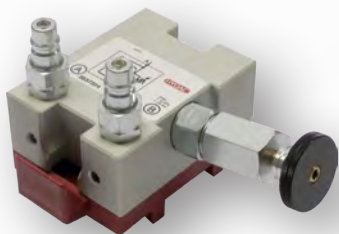
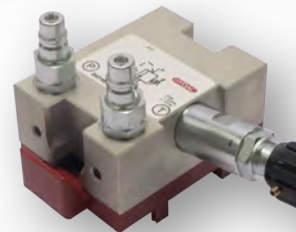
Internet: [www.hydac.com](http://www.hydac.com)  
E-Mail: [systeme@hydac.com](mailto:systeme@hydac.com)

# Components

physical  
hydraulic  
and electrical  
basics

# Sensors

measure  
evaluate  
simulate



# Software



**Components**

**DIN  
IEC**

**physical  
hydraulic  
electrical  
basics**

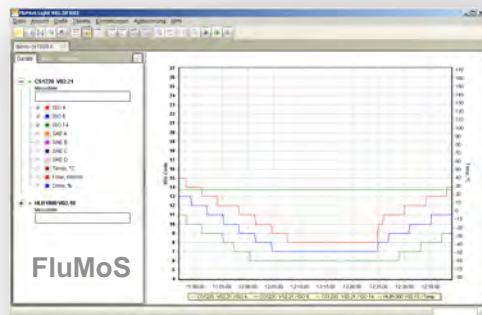
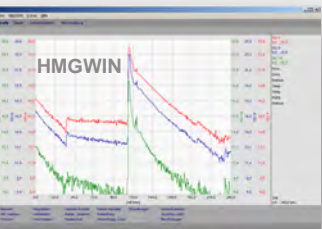
**Sensors**

**measure  
evaluate  
simulate**

**Utilize  
components**

**Promote  
creativity**

**Individual  
Development**



IN ISO 1219  
IEC 61131-3

**Schematics**

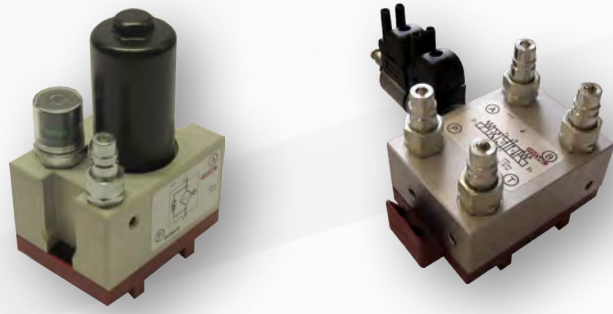
control  
regulate  
program

**Software**

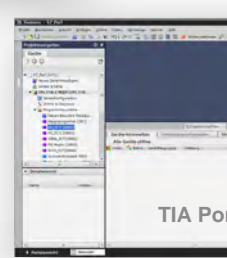
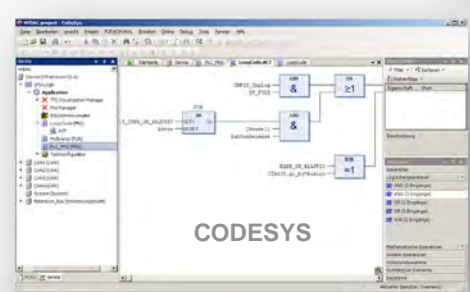
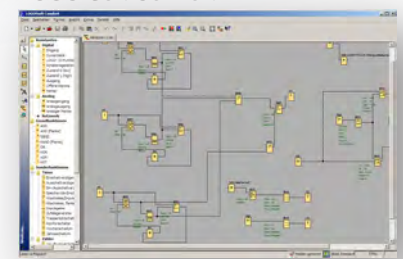
**Expand  
skills**

**System  
approach**

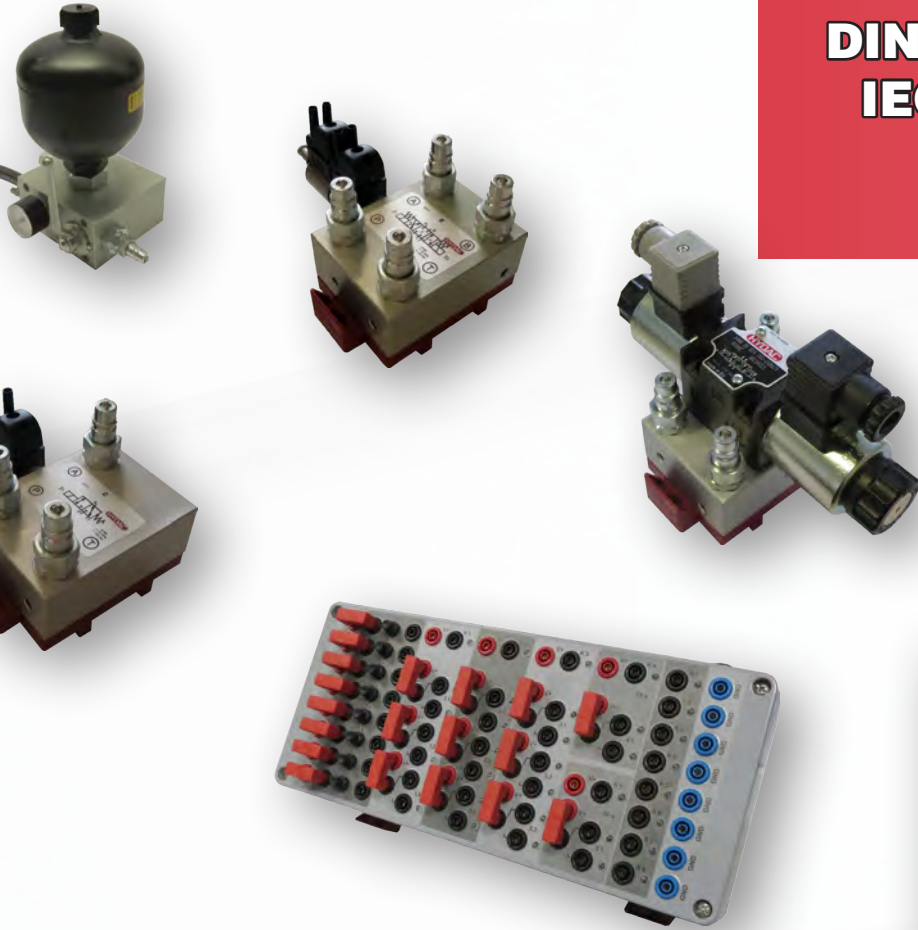
**Measuring &  
Monitoring**



LOGO!Soft Comfort

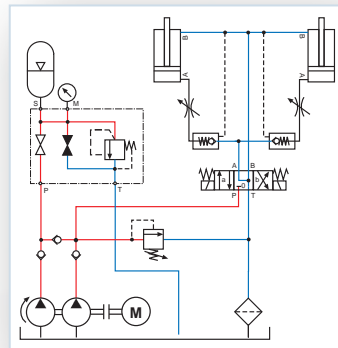


# Components

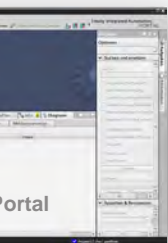
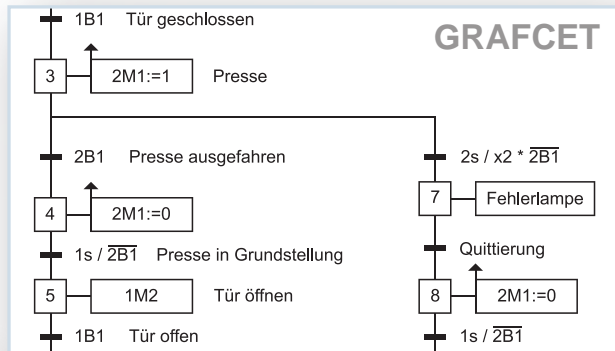


**DIN ISO 1219  
IEC 61131-3**

DIN ISO 1219



**Schematics**



**control  
regulate  
program**

# Software